

Star Formation and U/HLXs in the Cartwheel Galaxy

Purpose: To examine and compare the Cartwheel Galaxy in optical and X-ray bands and determine the sources of the ultra- and hyperluminous x-rays (U/HLXs).

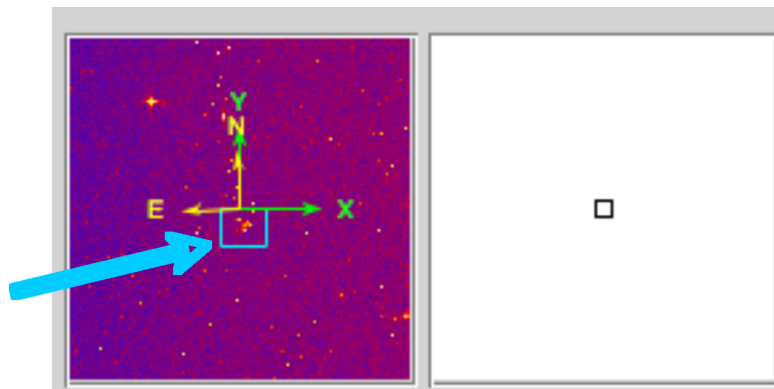
Procedure:

Install the software and load the FITS file (data/image file):

1. Download and install ds9 according to the instructions on the [Chandra-Ed](#) web site.
2. Open ds9. From the menus, choose **Analysis>Virtual Observatory>Chandra-Ed Archive Server**.
3. In the new window that comes up, scroll down to and click **ObsID 2019 – THE CARTWHEEL’S RING**.
4. When the image is loaded, go back to the **SAOImage ds9** window. Maximize your screen. Choose **Scale>Square Root** and **Color>b**.

Acquiring the optical image:

5. Choose **Analysis>Image Servers>SAO-DSS** and then click **Retrieve** in the new window that comes up. What are the coordinates of the Cartwheel Galaxy? right ascension– α _____, declination– δ _____
6. With the new frame on the right chosen (it should be outlined in blue), choose **Zoom>Zoom 4**. Center the Cartwheel Galaxy in the frame by moving the blue rectangle over it in the small image in the upper right corner (see below).



Matching up the x-ray and optical images:

7. With the frame on the right still chosen, go to **Frame>Match Frames>WCS**.
8. Click the frame on the left. Adjust the contrast and bias to better see the point x-ray sources using **Colors>Colormap Parameters** (suggested settings, **Contrast–4.4, Bias–0.25**).
9. Contour lines may help define these x-ray sources. Go to **Analysis>Contours** and then **Analysis>Contour Parameters**. In the new window, use these settings: **Contour levels–10, Contour Smoothness–1, Low–0, High–550** and then click **Generate, Apply** and **Close**.

10. To explore where these x-rays sources are located in the optical image, choose **Edit>Crosshair** and **Frame>Lock Crosshairs>WCS**. Move your cursor (while holding the left click) over the x-ray point sources. Note their locations on the optical image.

Determining the size of the ring:

11. Go to **Edit>Pointer**. Click the right frame. Left click (hold this down) in the center of the Cartwheel Galaxy and drag a circular region around the galaxy. The region should be just big enough to enclose the entire ring. Once you have drawn the region, if you left click on it again, green squares will appear in the corners of the region. You can left click in the center and drag the circle to the correct spot if it is slightly off-center or change the size by left-clicking on one of the green squares at the corner and dragging.

12. Click on the left frame. Go back to **Edit>Crosshair**. Move the crosshairs on the x-ray image to determine the diameter of the region you drew in #11 in the optical image. Record the physical x- and y-coordinates (see upper left corner of the window) of two points on opposite sides of the circle.

File	2019.fits			
Object	CARTWHEEL			
Value	18			
FK5	α	00:37:55.170	δ	-33:42:27.24
Physical	X	3677.551	Y	4096.064
Image	X	210.593	Y	223.777
Frame 1	Zoom	9.265 9.266	Angle	0.000

$(x_1, y_1) = (\quad , \quad)$ $(x_2, y_2) = (\quad , \quad)$

Find the distance in pixels between these points using

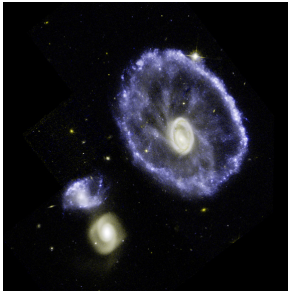
$$d = \sqrt{(x_2 - x_1)^2 + (y_2 - y_1)^2}$$

13. In a Chandra observation, 1 pixel = 0.5 arc sec. Also, 1 radian = 206,265 arc sec. Convert your answer from #12 to radians.

14. Use the small angle formula below to determine the size of the ring in light years. The distance to the Cartwheel Galaxy is ~380 million light years. How does the size of the ring compare to that of the Milky Way Galaxy (~100,000 light years in diameter)?

angular size in radians= (actual size of object) / (distance to object)

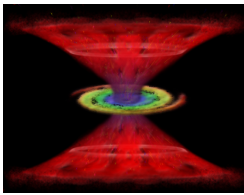
Conclusions and Analysis:



Cartwheel Galaxy (Hubble)

The gravitational disruption of a smaller intruder galaxy passing through the Cartwheel Galaxy compressed the interstellar gas and dust – causing a wave of star formation to move out from the impact point like a ripple across the surface of a pond at ~200,000 mi/hr. The wave of new star formation from the head-on collision has produced the ring-like structure seen in the optical image to the right.

1. In the Hubble image above, the bright blue knots represent areas of new star formation. How do the locations of the majority of X-ray sources compare to these areas?
2. Using the information above and your answer to #14, determine how long ago the collision of galaxies may have occurred. (1 light year = $5.87849981 \times 10^{12}$ miles)



Chandra AGN Illustration

The supermassive black hole at the center of an Active Galaxy is called an Active Galactic Nucleus or AGN. Galaxies that contain an AGN emit enormous amounts of radiation (radio, optical, X-rays, gamma rays) and particle jets and are highly variable. X-rays from AGNs are produced when in-falling matter from the surrounding disk is heated to temperatures of millions of degrees as it swirls toward the supermassive black hole. Some of the in-falling material escapes as a hot wind that is blown away from the disc at speeds as high as a tenth of the speed of light.

3. From your comparison of the x-ray and optical images of the Cartwheel Galaxy, does it seem to have an AGN? Explain.
4. Use your knowledge of stellar evolution, your ds9 analysis, and the chart of stellar life spans below to explain what types of objects each of the X-ray sources might be. You may have different answers depending upon the location of the X-ray source (i.e. along the ring, within the ring, outside the ring).

<i>Star Mass (solar masses)</i>	<i>Time (years)</i>	<i>Spectral Type</i>	<i>Color</i>
60	3 million	O3	bluest
30	11 million	O7	bluest
10	32 million	B4	bluish
3	370 million	A5	blue-white
1.5	3 billion	F5	white
1	10 billion	G2 (Sun)	yellow
0.1	1000's billion	M7	red

5. Compare your findings to those published in the paper, *Nonnuclear Hyper/Ultraluminous X-Ray Sources in the Starbursting Cartwheel Ring Galaxy*, Yu Gao,¹ Q. Daniel Wang,¹ P. N. Appleton,² and Ray A. Lucas³, **The Astrophysical Journal Letters**, 596:L171–L174, 2003 October 20.

<http://www.iop.org/EJ/article/1538-4357/596/2/L171/17541.html>

Extensions: Suggestions for further investigations of colliding or starburst galaxies using ds9.

1. *The Antennae: Chandra Locates Mother Lode of Planetary Ore in Colliding Galaxies*
<http://chandra.harvard.edu/photo/2004/antennae/>
2. *M82: Images From Space Telescopes Produce Stunning View of Starburst Galaxy*
<http://chandra.harvard.edu/photo/2006/m82/index.html>

To load the images into ds9, go to **Analysis>Virtual Observatory>Chandra-Ed Archive Server**. In the new window that comes up, scroll down to the bottom of the page and click **Unofficial Chandra Public Archive**. In the next window enter the **OBS ID** given in “**Fast Facts**” section of the links above. Click **Search** and then the link that comes up under **Title**. In addition to the type of analysis you have done in this activity, you can analyze the spectra of these galaxies. Instructions for analyzing spectra are in the ds9 activity, [X-Ray Spectroscopy of Supernova Remnants](#).